

SPECIFICATIONS:

ENGINE:

IH 4-cylinder, 4-cycle Diesel with 5 bearing crankshaft, Aluminium alloy pistons with 3 compression and 2 oil rings. Bosch injection pump with built-in mechanical type governor. Swirl type precombustion chambers. Fuel filter. Pressure lubrication. Oil filter. Oil bath air filter. Pump circulated water cooling. Thermostat. Radiator curtain.

Horsepower (Stripped engine)	39	Rear axle, center, in.	14 ¹ / ₂
Rated governed engine speed R.P.M.	1,700	Front wheel tread, non-adjustable:	
Maximum torque ft./lb.	108	With wheels dished in, in.	49 ¹ / ₄
R.P.M. at maximum torque	1,450	With wheels dished out, in.	59
Bore, in.	3 ⁷ / ₁₆	Front wheel tread, adjustable in.	49 ¹ / ₄ —74 ¹ / ₄
Stroke, in.	4	(in 2 in. or 4 in. increments)	
Piston displacement cu. in.	148.8	Rear wheel tread, adjustable in.	49 ¹ / ₄ —74 ¹ / ₄
Compression ratio	19:1	Minimum turning radius in.	106
Crankcase capacity, gal.	1.7	(with steering brake)	
Cooling system capacity, gal.	3.7		
Fuel tank capacity, gal.	7.93		

BELT PULLEY:

Belt pulley speed R.P.M. (At rated engine speed)	1,440	8 speed AGRIONATIC		
Diameter and width in.	9 ¹ / ₂ x 6 ¹ / ₄	Lubricant capacity, gal.	5.3	
		Speeds:	(at rated engine speed)	
			with 10—28 tires	with 11—28 tires

POWER TAKE-OFF:		Low Range	km/h	m.p.h.	km/h	m.p.h.
Speed R.P.M.	577	First	1.8	1.1	1.9	1.2
Diameter, in.	1 ¹ / ₄	Second	3.6	2.2	3.8	2.3
		Third	5.7	3.5	6.0	3.7
DIMENSIONS AND WEIGHT:		Fourth	7.1	4.4	7.5	4.7
Length, overall, in.	115 ¹ / ₄	Reverse	3.0	1.9	3.2	2.0
Width, overall, in.	64 ¹ / ₂	High Range				
Height, overall, in.	61 ¹ / ₂	Fifth	4.8	3.0	5.0	3.1
Weight (with regular equipment)		Sixth	9.3	5.8	9.9	6.1
lb. approx.	3,140	Seventh	14.9	9.2	15.7	9.8
Ground clearance:		Eighth	18.8	11.7	19.7	12.3
Front axle, center, in.	15 ¹ / ₄	Reverse	8.0	5.0	8.4	5.2

REGULAR EQUIPMENT:

IH AGRIONATIC 8-Speed Transmission. Adjustable tread, rigid front axle. Differential lock. Rear power take-off. Double disc brakes, hand operated and foot operated; individual or simultaneous pedal braking. Independent handbrake. Hand and foot accelerator. Muffler. Electric 12-Volt starting and lighting. Instrument panel light. Oil pressure indicator. Oil, air, and fuel filters. Front draw clevis. Elephant-ear type, rear fenders with rear spot-light, P.T.O. master shield.

TIRES:	Front	5.00—16	Rear	10—28
---------------	-------	---------	------	-------

SPECIAL EQUIPMENT:

Double-acting hydraulic lift. Category I and II three-point hitch with adjustable third hitch point, adjusting crank, leveling link and adjustable drawbar. Fast-Hitch with category I and II 3-point adapters. Adjustable tread, spring mounted front axle. Swinging drawbar. Crown type fenders. Fender seat. Pre-cleaner for air filter. Belt pulley drive with belt pulley. Hour meter. Vertical exhaust pipe. Front wheel splash shields. Agronomic extension lever. Steering wheel lock attachment. Standard drawbar extension. Drawbar platform. Implement drawbar for fast hitch. Upholstered driver seat. Fuel feed pump. Second fuel filter with fuel feed pump. Control valve attachments. Front loader. Adjustable swivel type trailer hitch. Front and rear wheel weights.

Front	Rear	
5.50—16 with 10—28 or 11—28		*6.00—16 with 9—36 or 12.75—28 or 13—20**
6.00—16 with 10—28 or 11—28		*6.00—19 with 11—36**
7.50—16 with 9—36 or 11—28		*7.50—16 with 11—36 or 13—30**
6.00—19 with 9—36		* Tractors with this tire equipment require High Clearance Frame.
*4.00—19 with 9—36		** For tractors with elephant-ear-type fenders only.
*5.50—16 with 9—36		



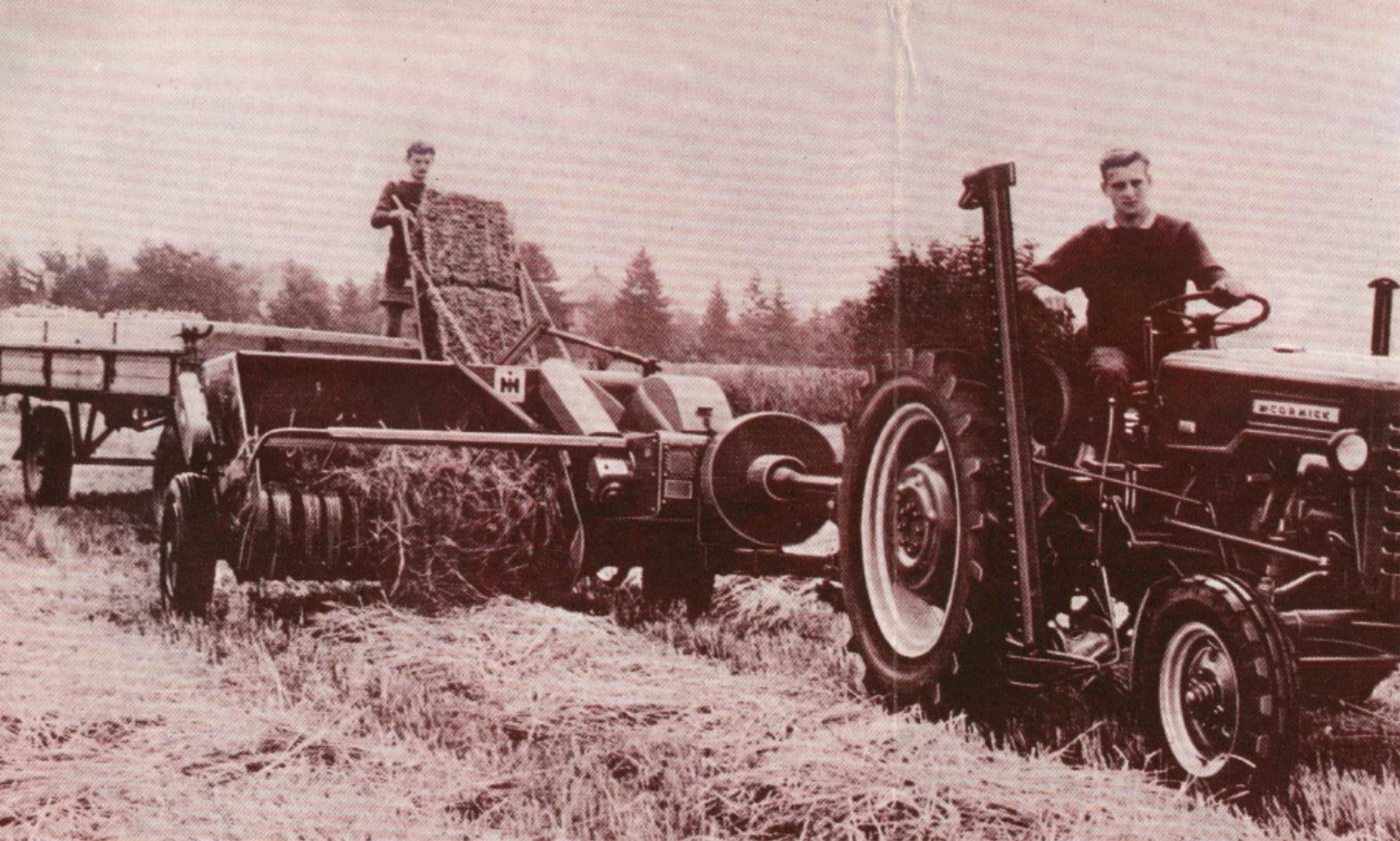
with



INTERNATIONAL HARVESTER
INTERNATIONAL HARVESTER COMPANY M.B.H.
NEUSS/RHINE GERMANY

POWER

plus versatility



POWER

that pays



Working pictures of the D-436
with matched IH machines and
implements.

POWER

that produces profit



D-436
STANDARD

8 good reasons why the D-436 is the best buy on the market

Agriomatic: The only tractor with this unique type transmission allowing tractor speed to be reduced, stopped or remotely controlled, without declutching or shifting gears.

Brakes: double disc, the very latest design in positive tractor braking, can be operated singly to assist steering or simultaneously for normal service; an independent parking handbrake is also available.

Controls: You'll find all operating controls and instruments conveniently positioned for quick reading and easy application.

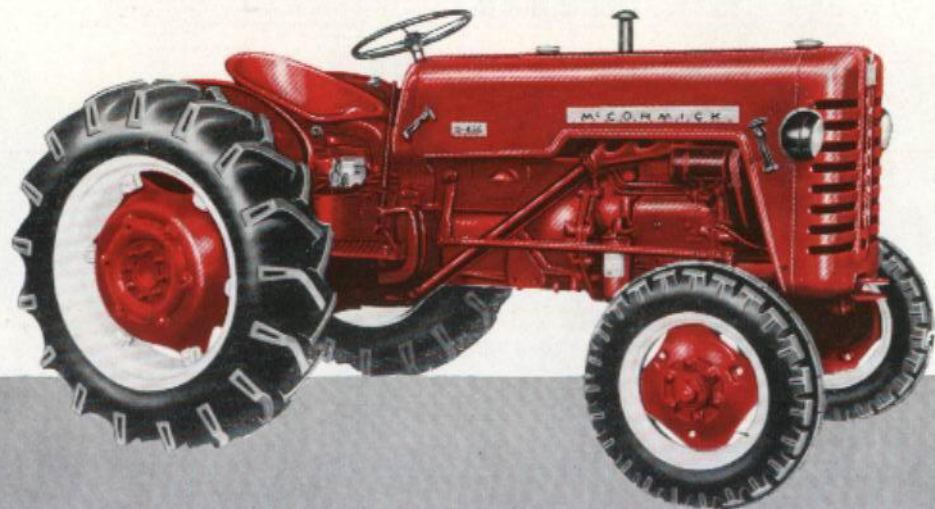
Design: Simple, sturdy and compact, designed to meet all your needs where a hard rugged service is required.

Engine: smooth-running, 4 cylinder direct starting IH diesel engine, developing 39 hp, will enable you to farm economically, efficiently and give years of trouble-free operation.

Features: a host of working-easing, labour-saving features designed to reduce driver fatigue and speed job-operation.

Gears: 8 forward and 2 reverse gears, tractor speed varies from (creep) 1,1 m.p.h. (1,8 km/h) to 12,3 m.p.h. (19,7 km/h) providing you with the right speed for every job.

Hydraulics: "live" hydraulic power is at your finger tips the moment the engine starts to "purr". It is not affected by P.T.O. engagement or through gear shifting. Pressure can be exerted either as a lifting or downward force.



- 4-cylinder 39 hp IH diesel engine
- Exclusive IH "Agriomatic" transmission
- Self-energising double-disc brakes
- Fully "live" hydraulics
- Differential lock
- Adjustable tread
- Constant-running P. T. O.
- Weight transfer 3 point hitch



All regular features