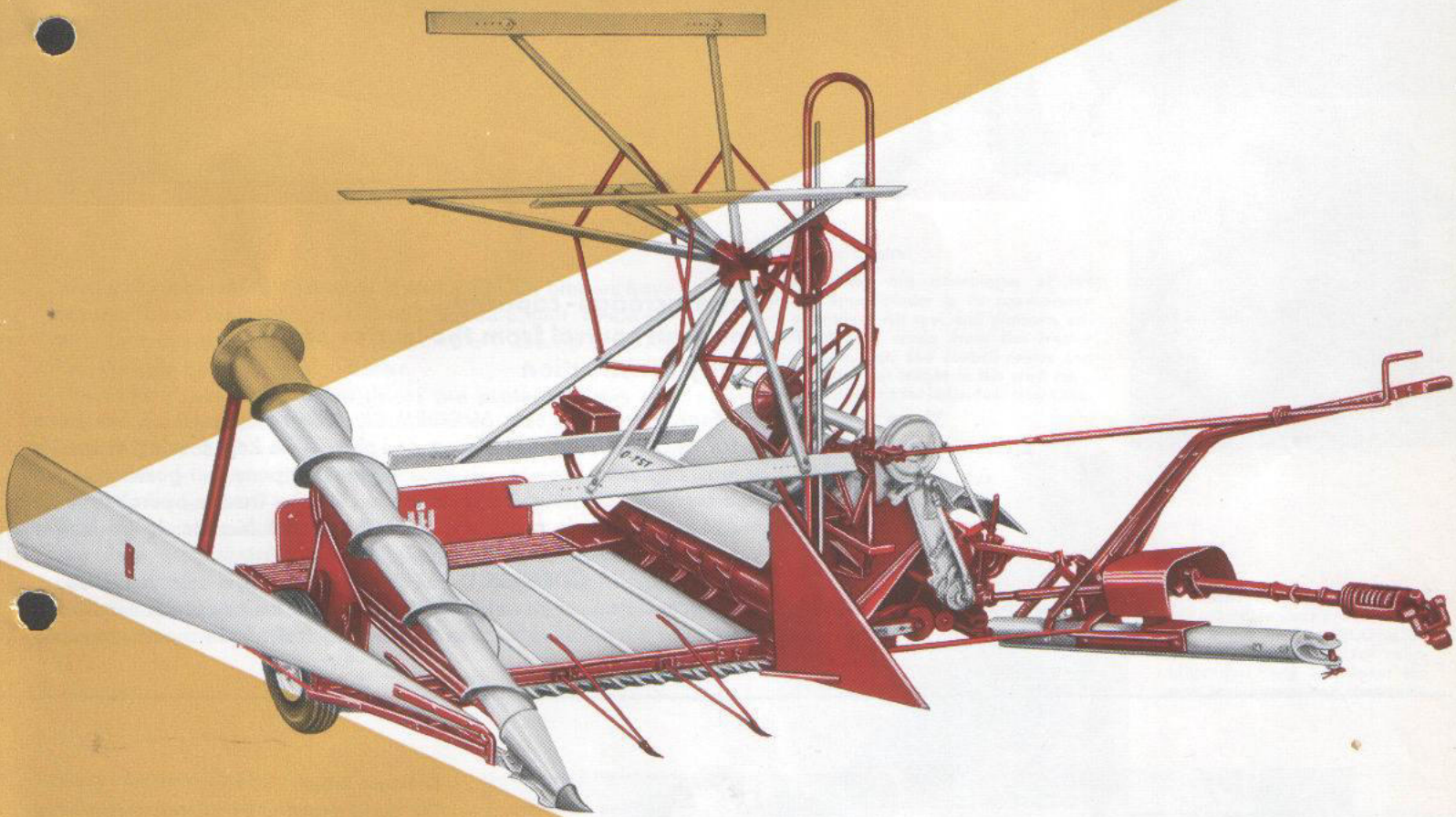




**MCCORMICK**  
INTERNATIONAL

# D-7ST SPEED-BINDER\*



**The Tractor Binder for a Speedy Harvest**

\* The binder can, and should, be kept moving.

# D-7ST SPEED-BINDER

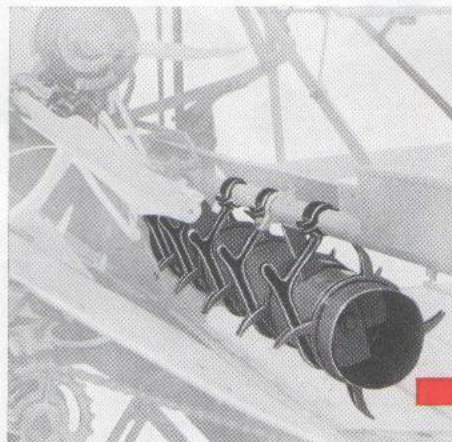
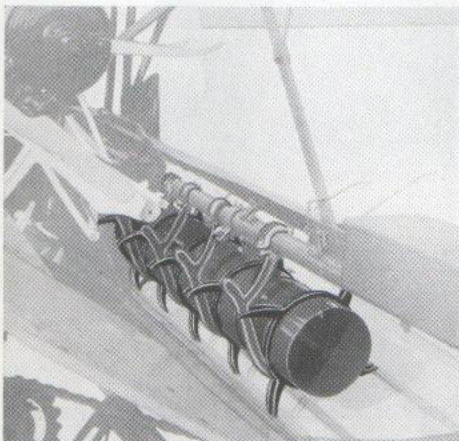
5 ft righthand cut – weight approx. 1,370 lbs., with regular equipment



- Large acreage-capacity
- One man control from the tractor seat
- Sturdy construction

These are the main features of the new McCORMICK Speed-Binder which has been especially designed for tractors with p. t. o. It can, and should, be kept moving at tractor speed, for that is its most important feature – its speedy, working pace that guarantees the farmer large acreage-capacity. The machine is controlled by the tractor operator which means that the second man, who is necessary on conventional binders, is no longer required.

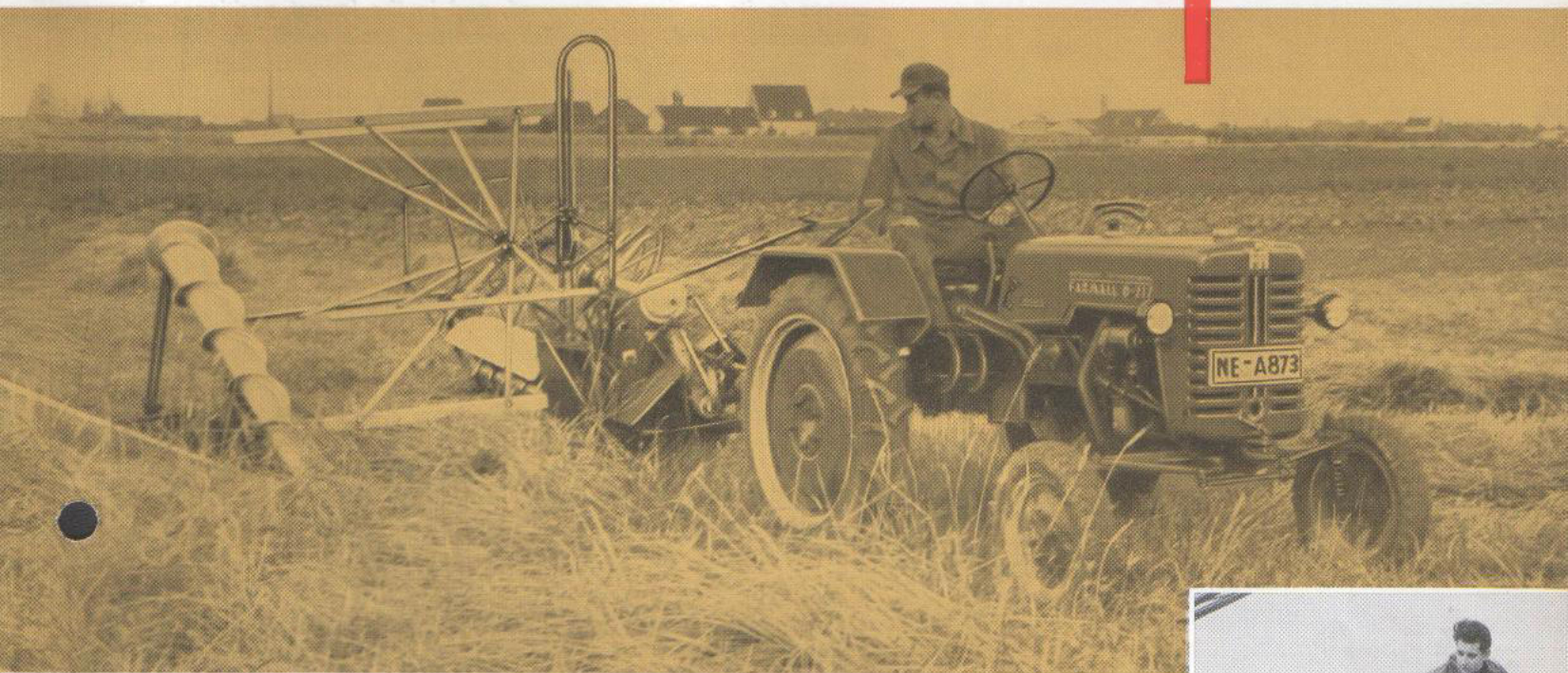
Despite the light weight of the McCORMICK D-7ST Speed-Binder, it is extremely robust. A 10 b. h. p. tractor will provide ample power to drive the binder under normal conditions. The more important parts of the machine, such as the knottor, reel, platform, etc., are time



#### Conveyer Roller

The special design of the strippers prevent straw from wrapping around the conveyer roller. Accurate design of the driving mechanism ensures that the speeds of the platform canvas, conveyer roller, and packers are so timed that gentle but positive handling of the grain in a smooth, continuous flow to the binding mechanism is assured.

The two adjacent illustrations show the arrangement of the tines on the conveyer roller and the method of securing the strippers. A conveyer roller extension which is supplied for long crops is easily attached.



tried units with which thousands of McCORMICK binders have already been equipped. The D-7ST Speed-Binder is exceptionally compact and low-built, this means a shorter drop for the sheaves and less grain shatter.

The roller conveyer and reel drives are protected from dirt and straw wrapping. The main and grain wheels are mounted on ball-bearings. An infinitely variable crank adjustment is provided for raising and lowering the wheels so that the machine can be quickly and easily adapted to extreme terrain conditions.

The new McCORMICK D-7ST Speed-Binder, designed and developed by the International Harvester Company in Neuss, is especially suitable for the smaller farm where it is an ideal labour saver at harvest time.

#### One Man Control

One of the big advantages of the D-7ST Speed-Binder is its convenience of operation. All reel and platform adjustments are made from the tractor operator's seat. The control levers can be adjusted for length to the most comfortable position for individual operators.



#### Knotted

All parts of the knotted which are subject to wear are hardened and polished. The McCORMICK knotted is renowned for reliability and long life under the most severe operating conditions.

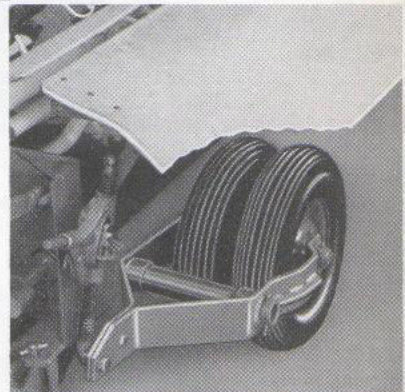
#### Sturdy Steel Roller-Chain Drive

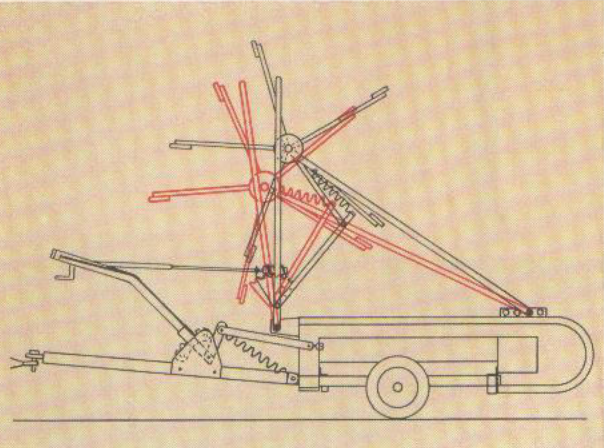
A single steel roller chain transmits power from the p. t. o. to all auxiliary drives. Self-aligning ball and roller bearings assure light draught under all operating conditions.



#### Main Wheels

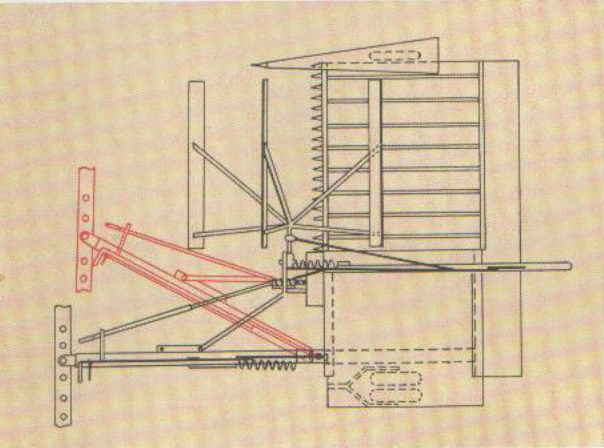
The twin rubber tired main wheels have large ground contact. Like the grain wheel they are mounted on roller bearings and the variable adjustment provided permits easy adjustment of the machine to varying ground conditions.





### Practical Combination of Reel Height and Angle Adjustment

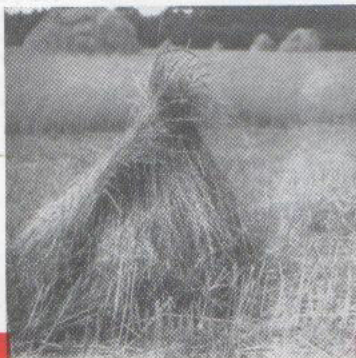
The reel control crank is mounted alongside the platform tilting lever. Both controls can be operated from the tractor seat. The reel control crank affords, within the limits provided, any height adjustment desired. In the highest position the reel automatically moves to its maximum rearward, and in the lowest position to its maximum forward, position. For abnormal grain conditions the fore and aft adjustment of the reel can be increased by moving the reel support brace to an alternate hole in the reel bracket.



### Quick Change-over from Transport to Working Position

The conversion of the D-7ST Speed-Binder from the transport to the working position (or vice versa) is as easy as it is practical. In one simple operation the D-7ST Speed-Binder can be brought into the desired position with a minimum of effort. The conversion is effected by simply swinging the tractor hitch to the right and placing the end of the tie rod in the forward hole in the hitch, as shown in the illustration at the left.

All grain crops - as well as rape and grass seeds - are quickly and carefully harvested with the D-7 ST McCORMICK Speed-Binder. The machine performs perfectly under even the most difficult working conditions.



**INTERNATIONAL HARVESTER**  
INTERNATIONAL HARVESTER COMPANY MBH  
NEUSS/RHINE GERMANY

Specifications subject to change without notice.